



Partnership in Prosperity

June 27, 2016

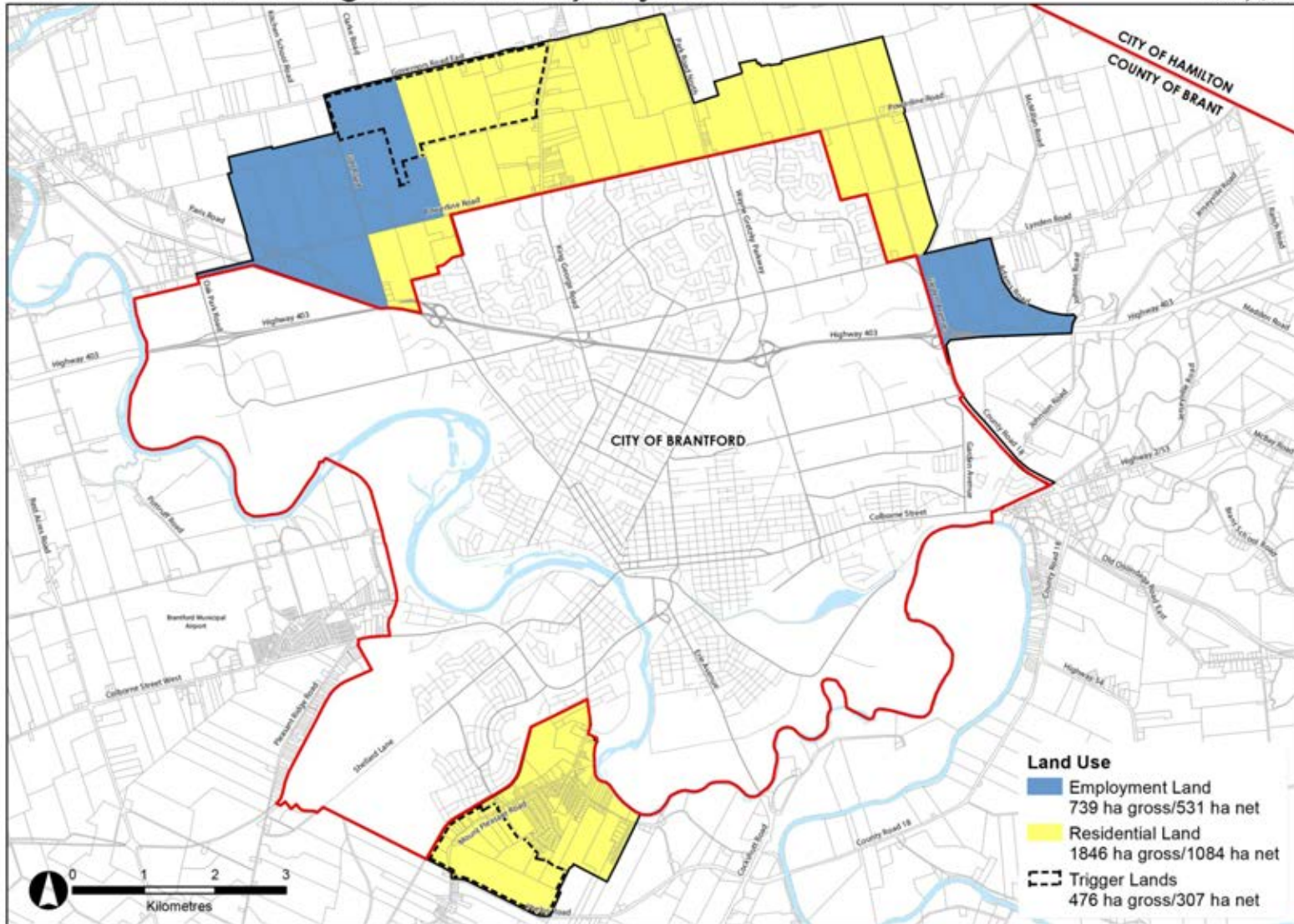


Boundary Adjustment Update

- January 6, 2016: Memorandum Of Understanding is signed by the Mayors of both the City of Brantford and the County of Brant
- Two Public Information Centres held to obtain public feedback: January 14th and 21st - approximately 600 participants
- County Council approved the a revised map on January 26th, 2016) and on February 2, 2016, City Council approved the same updated map which reflected public input
- February 16, 2016: Both City and County Councils approved the Boundary Adjustment Agreement

Recommended Changes to Boundary Adjustment

February 2, 2016



Boundary Adjustment Update

- Boundary Adjustment Agreement was forwarded to Staff at the Ministry of Municipal Affairs and Housing (MMAH) for their initial review in February, 2016
- City and County Staff met with Provincial Staff on March 4, 2016 to address Provincial concerns about the Boundary Adjustment Agreement including:
 1. Consultation with Six Nations of the Grand River and Mississauga's of the New Credit First Nations;
 2. Compensation to be paid to the County by the City from development applications (i.e. \$850 per residential unit and \$3,500 per hectare employment land); and,
 3. Including a date for the Trigger Lands to be transferred to the City

Boundary Adjustment Update

- City and County staff presented the proposed boundary Adjustment to the Elected Council of Six Nations of the Grand River on February 29, 2016
- City and County Staff met with Staff from Six Nations of the Grand River on March 22, 2016 where they advised that additional lands in Tutela Heights should be included in the Boundary Adjustment, and;
- That Six Nations of The Grand River are interested in participating in the Joint Ventures

Boundary Adjustment Update

- Letters sent on March 24, and April 21, 2016 to the Mississauga's of the New Credit First Nation inviting them to consult on the Boundary Adjustment.
- City staff were advised on May 12, that the Mississauga's of the New Credit First Nation had no concerns with the Boundary Adjustment .

Boundary Adjustment Update

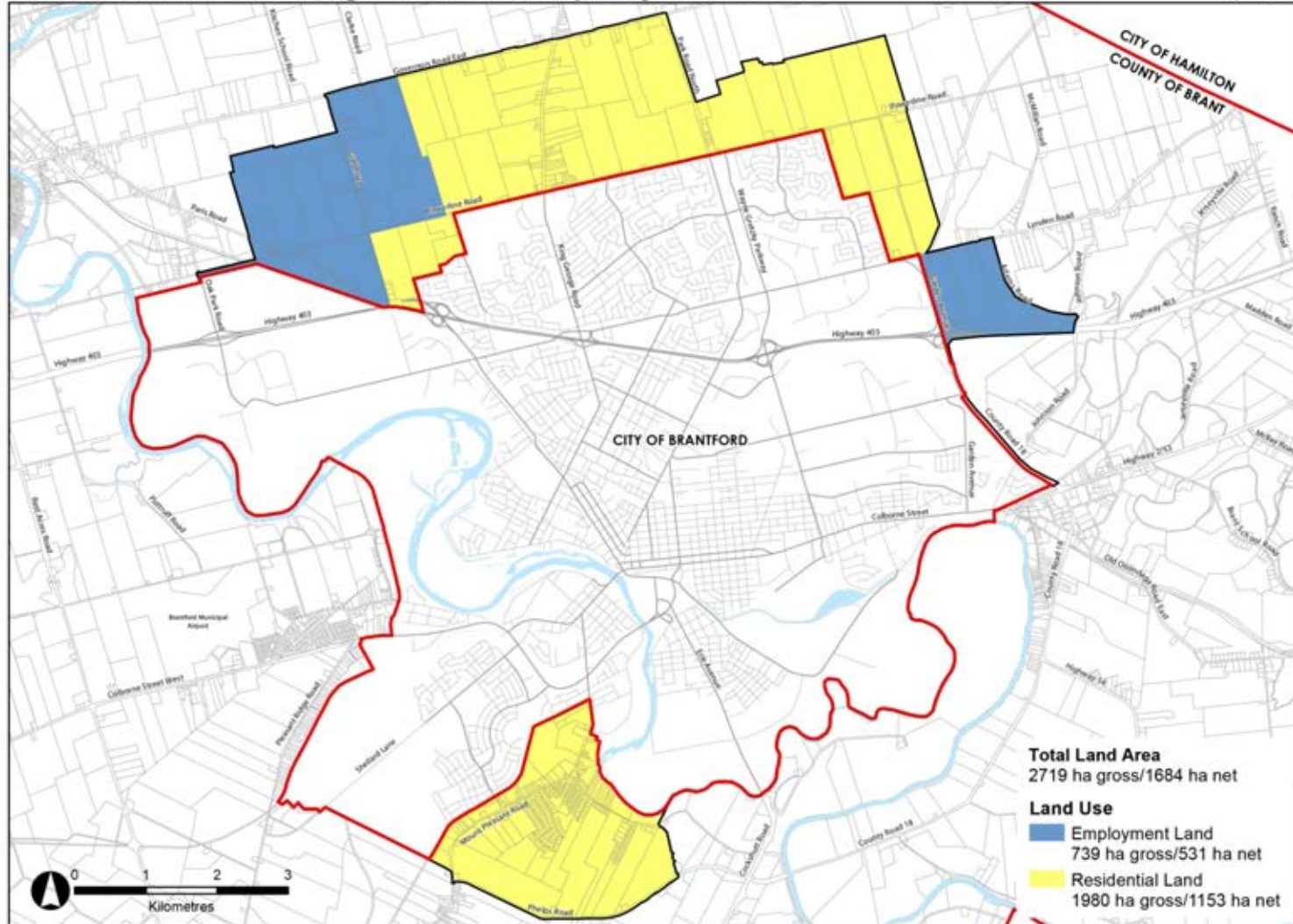
- As a result of completing Consultation with all interested parties, the following changes have been made to the proposed Boundary Adjustment:
 1. Additional lands added to Tutela Heights as requested by Six Nations of the Grand River
 2. Trigger Lands removed from the initial transfer and are to be regulated through Planning Policy (Official Plan)
 3. Six Nations of the Grand River are to be a participant in the Joint Ventures
 4. Revised Compensation payment method

Revised Compensation Method of Payment

- Additional lands = additional units: approximately 11,500 now
- $11,500 \times \$850/\text{residential unit} = \$9,775,000$
- $531 \text{ net ha employment land} \times \$3,500/\text{ha} = \$1,858,500$
- Total Compensation = \$11,633,500
- To be paid over 10 years to the County (starting in 2018)
 $\$11,633,500/10 \text{ years} = \mathbf{\$1,163,350 \text{ per year}}$

Recommended Changes to Boundary Adjustment

April 8, 2016





Thank You

